

GATOR™ MID-SIZE XUV SERIES

CROSSOVER UTILITY VEHICLES



JOHN DEERE



RUN WITH US



2 PASSENGER — E & M

Crossover to the mighty Mid-Size Series. Its rugged exterior frame holds a surprisingly spacious interior. Handle tight spaces, haul and tow, all with a nimble footprint. This family of Gator UVs is the 4x4 UTV you've been clamoring for. At a price you'd never dream to ask. So go ahead: get to know your next favorite utility vehicle.



Engine

The Gator XUV590E and XUV590M are powered by a 586-cc (35.8-cu in.), 32-hp (23.9 kW) overhead-valve engine that can tow up to 1,500 lb. (680 kg) with a 900-lb. (408 kg) payload capacity. Yet still provide a comfortable ride with quick pickup.



Colorful, Easy-To-Read Dash Panel on the XUV590M with indicator lights helps you keep an eye on everything from speed and gear position to service warnings.



Four-Wheel Independent Suspension for incredible ride and handling.



Mid-sized. Mammoth capabilities.

XUV560E

Meet the Gator™ UV with a lot of bite. This durable, rugged crossover also comes with a price tag as eye-catching as its body design. Inside and out, the XUV560E brings more power, performance and operational ease to your farm, field or weekend charting the uncharted. With its 500-lb. (227 kg) cargo capacity, the XUV560E will handle heavy loads, but it's nimble enough to navigate tight spaces and wicked turns. It's the utility vehicle that offers more utilities than ever.

XUV590E and XUV590M

The Gator UVs that cannot be stopped. Think of your toughest trail, your muddiest field. Now picture these utility vehicles handling them before you break for lunch. Four-wheel independent suspension, power steering and a 32-hp (23.8 kW) 586 cc engine make for balanced acceleration and exquisite handling. But these Gator UVs also offer creature comforts—a quiet operators station, automotive-like ergonomic controls, an easy-to-read dash panel, and side-by-side seating. We've forgotten nothing, so you can do everything.

Improved Power steering on the XUV590M provides smoother, automotive-like handling and outstanding durability against the most rugged terrain.



Shift Control Lever with integrated park position makes this our easiest, most accurate shifting Gator UV yet. Electronic 4WD and differential lock engagement lets you gain traction the instant you need it with the flip of a switch.



Tie-down points and integrated cargo box with optional cargo rail help you manage your load while utilizing every square inch of space.

4 PASSENGER — E & M

XUV560E S4

Ideal for hauling both friends and freight, the XUV560E S4 stands out for its versatility, raw power and smooth performance. A massive payload capacity, superior cargo box, standard pickup-style tailgate and speeds up to 28 mph (45 km/h) will make your toughest workday sail by. Its improved cockpit and improved four-wheel drive will make you feel like you're in a sedan. Though a sedan that craves rocky trails and canyons.

XUV590E S4 and XUV590M S4

These easy-to-handle vehicles have room for four and a whole lot more. Comfort and convenience, just to name two. An improved shift pattern with integrated park position makes for a very smooth time behind the wheel, regardless of the terrain you're tackling. 4WD switch delivers traction the moment you need it. The enhanced dash panel delivers car-like operation. LED lights, because you don't quit when the sun calls it a day.





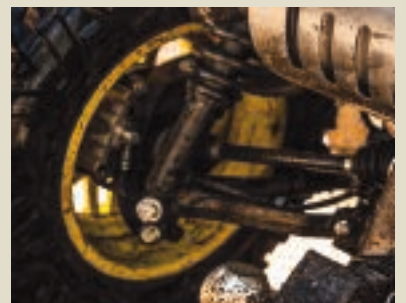
Optional Under-seat Storage provides an additional 9-gal (35 liters) to optimize space and keep items safe and secure on the trail.



Convert rear seat into an additional cargo area to keep tools secure while you raise and lower your cargo box. Adds 4.3 cu. ft. of space and holds up to 200 lb. (91 kg).



Colorful, Easy-To-Read Dash Panel with indicator lights now let you see everything from speed to gear position. XUV590 S4 models have new RPM and service interval reminders to help you easily monitor everything you'll want to keep an eye on.



High-strength cast-iron knuckle and upper A-arm support the high stresses of the shocks, constant-velocity (CV) shaft, and wheels in rocky terrain.



Make your Gator™ XUV your own.

Choose a color that speaks to you, a tire that works for your workday, and attachments that let you go all out.

Color Options



Olive & Black

XUV590E, XUV590M, XUV590E S4 and XUV590M S4 optional.



Green & Yellow

XUV560E, XUV590E, XUV590M, XUV560E S4, XUV590E S4, XUV590M S4 is included in base.



TrueTimber® Kanati Camo

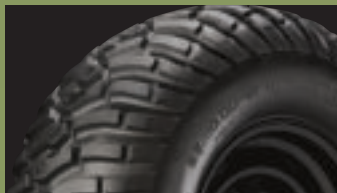
XUV590E, XUV590M, and XUV590M S4 optional.

Tires and Wheels



Maxxis BigHorn 2.0 Radials

For extreme terrain.
Front: 25X8-14, Rear: 25X10-14



Terra Hawk ATs

All terrain and all purpose, low impact on turf.
Front: 25X8-12, Rear: 25X10-12



14" ALLOY WHEELS

Customize your Gator UV with these eye-catching wheels. Available in yellow or black.



Front Brushguard

Protects the front end from whatever comes your way—and keeps your Gator looking sharp.



Rear Bumper

Protect your cargo box and tailgate with this 2" steel rear bumper.



Front Fender Guards

Protect front and side molding with heavy-duty 2" steel tubing.



Warn® Winch

3,500-lb. (1587 kg) winch. Includes a water-resistant remote control.



Front hood rack

Generously sized rack (48-in. long, 13.5-in wide and 3.5-in. deep), will carry up to 100 lb. of gear.



OPS Poly Roof

Year-round weather protection. Molded Year-round weather protection. Molded troughs channel water away from you.



Windshields

Keep bugs, wind and weather off your face. Half-, full poly and full glass available with wiper. Tool-less installation.



Cargo Box Wall Extensions

Extend the walls of your cargo box to protect larger loads. Easy Quick-Clamp install.

Specifications

KEY SPECS	XUV560E	XUV560E S4	XUV590E/XUV590M	XUV590E S4/XUV590M S4
Engine power	11.9 ¹ kW 16 hp	11.9 ¹ kW 16 hp	23.8 ¹ kW 32 hp	23.8 ¹ kW 32 hp
Cargo box dimensions	82 x 120.9 x 29.7 cm 32.3 x 47.6 x 11.7 in. 0.25m 8.9 cu ft	82 x 120.9 x 29.7 cm 32.3 x 47.6 x 11.7 in. 0.25m 8.9 cu ft	82 x 120.9 x 29.7 cm 32.3 x 47.6 x 11.7 in. 0.25m 8.9 cu ft	82 x 120.9 x 29.7 cm 32.3 x 47.6 x 11.7 in. 0.25m 8.9 cu ft
Cargo box capacity (weight)	227 kg 500 lb	227 kg 500 lb	227 kg 500 lb	227 kg 500 lb
Towing capacity	680 kg 1500 lb	680 kg 1500 lb	680 kg 1500 lb	680 kg 1500 lb
Front suspension	Fully independent dual A-arm with adjustable coil over shocks, 203 mm (8 in.) travel, anti-roll bar	Fully independent dual A-arm with adjustable coil over shocks, 203 mm (8 in.) travel, anti-roll bar	Fully independent dual A-arm with adjustable coil over shocks, 203 mm (8 in.) travel, anti-roll bar	Fully independent dual A-arm with adjustable coil over shocks, 203 mm (8 in.) travel, anti-roll bar
Rear suspension	Fully independent with lower A-arm and upper camber link with adjustable coil over shocks, 203 mm (8 in.) travel	Fully independent with lower A-arm and upper camber link with adjustable coil over shocks, 203 mm (8 in.) travel	Fully independent with lower A-arm and upper camber link with adjustable coil over shocks, 203 mm (8 in.) travel	Fully independent with lower A-arm and upper camber link with adjustable coil over shocks, 203 mm (8 in.) travel
Final drive	Park, high, low, neutral, reverse transaxle	Park, high, low, neutral, reverse transaxle	Park, high, low, neutral, reverse transaxle	Park, high, low, neutral, reverse transaxle
Four wheel drive	Dash switch actuated four-wheel drive system with limited slip front differential, plus locking rear differential	Dash switch actuated four-wheel drive system with limited slip front differential, plus locking rear differential	Dash switch actuated four-wheel drive system with limited slip front differential, plus locking rear differential	Dash switch actuated four-wheel drive system with limited slip front differential, plus locking rear differential
Fuel capacity	18.5 L 4.9 U.S. gal.	28 L 7.4 U.S. gal.	28 L 7.4 U.S. gal.	28 L 7.4 U.S. gal.
ENGINE				
Type	4-cycle gas, V-twin, dynamically tuned carb, overhead valves (OHV)	4-cycle gas, V-twin, dynamically tuned carb, overhead valves (OHV)	4-cycle gas, inline-twin, electronic fuel injection (EFI), overhead valves (OHV)	4-cycle gas, inline-twin, electronic fuel injection (EFI), overhead valves (OHV)
Displacement	570 cc	570 cc	586 cc	586 cc
Cooling system	Air cooled	Air cooled	Liquid cooled	Liquid cooled
DRIVETRAIN				
Transmission	Continuously Variable Transmission (CVT)	Continuously Variable Transmission (CVT) with clutch enclosure	Continuously Variable Transmission (CVT) with clutch enclosure	Continuously Variable Transmission (CVT) with clutch enclosure
Traction assist	Positive locking, switch actuated rear differential lock	Positive locking, switch actuated rear differential lock	Positive locking, switch actuated rear differential lock	Positive locking, switch actuated rear differential lock
BRAKES				
Type	196 mm ventilated four-wheel stainless steel disc brakes with hydraulic 34.93 mm (1.375 in.) diameter twin-piston calipers	196 mm ventilated four-wheel stainless steel disc brakes with hydraulic 34.93 mm (1.375 in.) diameter twin-piston calipers	196 mm (7.7 in.) ventilated four-wheel stainless steel disc brakes with hydraulic 34.93 mm (1.375 in.) diameter twin-piston calipers	196 mm (7.7 in.) ventilated four-wheel stainless steel disc brakes with hydraulic 34.93 mm (1.375 in.) diameter twin-piston calipers
Park brake	Park in-transmission	Park in-transmission	Park in-transmission	Park in-transmission
TIRES / WHEELS				
Front	25x8-12 Terrahawk AT (All Terrain) 4-ply rating yellow steel wheels Optional: 26x8-14 Maxxis® Bighorn® 2.0 6-ply rating aluminum alloy wheels, yellow or 26x8-14 Maxxis Bighorn 2.0 6-ply rating yellow steel wheels	25x8-12 Terrahawk AT (All Terrain) 4-ply rating yellow steel wheels or 26x8-14 Maxxis® Bighorn® 2.0 6-ply rating yellow steel wheels	25x8-12 Terrahawk AT (All Terrain) 4-ply rating steel wheels, various colors or 26x8-14 Maxxis® Bighorn® 2.0 6-ply rating steel wheels, various colors	25x8-12 Terrahawk AT (All Terrain) 4-ply rating steel wheels, various colors or 26x8-14 Maxxis® Bighorn® 2.0 6-ply rating aluminum alloy wheels, various colors or 26x8-14 Maxxis Bighorn 2.0 6-ply rating steel wheels, various colors
Rear	25x10-12 Terrahawk AT (All Terrain) 4-ply rating yellow steel wheels Optional: 26x10-14 Maxxis Bighorn 2.0 6-ply rating yellow aluminum alloy wheels or 26x10-14 Maxxis Bighorn 2.0 6-ply rating on yellow steel wheels	25x10-12 Terrahawk AT (All Terrain) 4-ply rating yellow steel wheels or 26x10-14 Maxxis Bighorn 2.0 6-ply rating yellow steel wheels	25x10-12 Terrahawk AT (All Terrain) 4-ply rating steel wheels, various colors or 26x10-14 Maxxis Bighorn 2.0 6-ply rating steel wheels, various colors	25x10-12 Terrahawk AT (All Terrain) 4-ply rating steel wheels, various colors or 26x10-14 Maxxis Bighorn 2.0 6-ply rating aluminum alloy wheels, various colors or 26x10-14 Maxxis Bighorn 2.0 6-ply rating steel wheels, various colors
CARGO HANDLING				
Dump	2-sided – Manual release (optional factory installed power lift)	2-sided – Manual release (optional factory installed power lift)	2-sided – Manual release (optional factory installed power lift)	2-sided – Manual release (optional factory installed power lift)
Tailgate	Center truck-style latch	Center truck-style latch	Center truck-style latch	Center truck-style latch
DIMENSIONS / CAPACITIES				
Wheelbase	1.86 m 72.8 in.	2743 mm 108 in.	1.86 m 72.8 in.	2743 mm 108 in.
Operating weight (includes fuel/fluids)	571 kg 1259 lb	683 kg 1507 lb	645 kg 1423 lb / 676 kg 1491 lb	761 kg 1678 lb / 788 kg 1736 lb
Length	2870 mm 113 in.	3658 mm 144 in.	2870 mm 113 in.	3658 mm 144 in.
Width	1435 mm 56.5 in.	1435 mm 56.5 in.	1435 mm 56.5 in.	1435 mm 56.5 in.
Height	1867 mm 73.5 in.	1880 mm 74 in.	1867 mm 73.5 in.	1880 mm 74 in.
Tread centers	Front: 1220 mm 48 in. Rear: 1168 mm 46 in.	Front: 1220 mm 48 in. Rear: 1168 mm 46 in.	Front: 1220 mm 48 in. Rear: 1168 mm 46 in.	Front: 1220 mm 48 in. Rear: 1168 mm 46 in.
Ground clearance	Minimum: 267 mm 10.5 in.	Minimum: 236 mm 9.3 in.	Minimum: 267 mm 10.5 in.	Minimum: 236 mm 9.3 in.
Hitch	Standard 50 mm (2 in.) rear receiver with optional 50 mm (2 in.) front receiver with recovery loops	Standard 50 mm (2 in.) rear receiver with optional 50 mm (2 in.) front receiver with recovery loops	Standard 50 mm (2 in.) rear receiver with optional 50 mm (2 in.) front receiver with recovery loops	Standard 50 mm (2 in.) rear receiver with optional 50 mm (2 in.) front receiver with recovery loops
COLOR OPTIONS				
	Green & Yellow	Green & Yellow	Green & Yellow, Camouflage, Olive & Black	Green & Yellow, Camouflage, Olive & Black
STORAGE				
	Oversized glovebox and underhood storage. Total volume of 12.8 gallons (48.7 l)	Oversized glovebox and underhood storage. Total volume of 12.8 gallons (48.7 l), with an additional 9 gallons available under seat	Oversized glovebox and underhood storage. Total volume of 8.4 gallons (31.8 l)	Oversized glovebox and underhood storage. Total volume of 12.8 gallons (48.7 l), with an additional 9 gallons available under seat



Nothing Runs Like A Deere™

†The engine horsepower and torque information are provided by the engine manufacturer to be used for comparison purposes only. Actual operating horsepower and torque will be less. Refer to the manufacturer's web site for additional information.

**Features, specs and attachments subject to change without notice. Before operating or riding, always refer to the safety and operating information on the vehicle, and in the Operator's Manual. Actual vehicle top speed may vary based on belt wear, tire selection, vehicle weight, fuel condition, terrain and other environmental factors. Travel responsibly on designated roads, trails or areas, respect the rights of others, and avoid sensitive areas such as meadows, lakeshores, wetlands and streams. This literature has been compiled for worldwide circulation. While general information, pictures and descriptions are provided, some illustrations and text may include finance, credit, insurance, product options and accessories NOT AVAILABLE in all regions. PLEASE CONTACT YOUR LOCAL DEALER FOR DETAILS. John Deere reserves the right to change specification, design and price of the products described in this literature without notice. John Deere's green and yellow color scheme, the leaping deer symbol, and JOHN DEERE are trademarks of Deere & Company.



DSTA80162 (20-10)

www.JohnDeere.com/Gator

www.JohnDeere.ca/Gator

